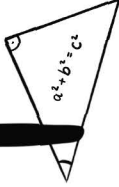


Queering



STEM




Collections

1st Vienna Workshop


This zine is a visual report of the 1st
conference "Outer Edge: Queering STEM Collections"
held in March 2020 @Technisches Museum Wien

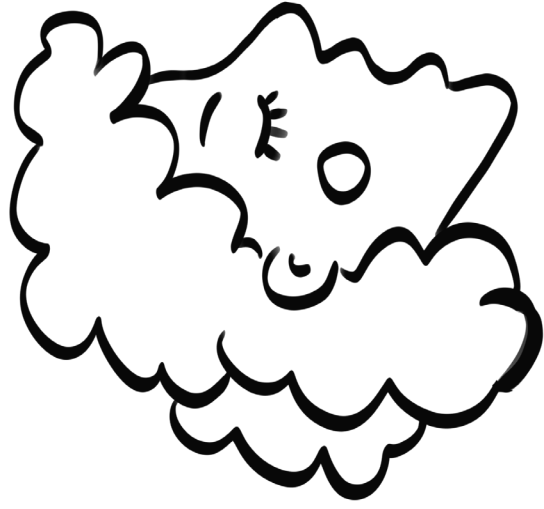
Layout & Live Recording
Kathrin Gusenbauer
irrlight - impressions.com



How can the science and technology museum, as a cultural and social institution, explore the opportunities of reflecting and developing a plural society?

This workshop critically attended to constructions of gendered and hetero-normative technology and science, and brought together scholars and practitioners to scaffold actions in museums, and build a network of interested parties.





! ! !
dive

Recordings



WORLD CAFE

REFRAMING HISTORICAL MUSEUMS

JOSH DAVIS & FLORENCE OKOYE

How can it be queered?

- * TAKE PART IN CITIZEN SCIENCE
- * REFRAME MODE OF COLLECTING
- * BATTLE BIAS IN GENERAL PUBLIC
- * LOOK FOR QUEER NARRATIVE
- * THESE ARE OFTEN HIDDEN WORK WITH THE LGBT+ COMMUNITY now!

GOOD VIBRATION

ANDREAS BRUNNER & FLORIAN HILDEBERGER

- * CURE DISEASE THROUGH MASTURBATION
- * "MACHINES CAN'T FAIL" - POWDERED BY WATER - OR A LIGHT BULB
- * MACHINES ARE NOT NEUTRAL
- * DOCTORS OR MESSAGES CHANGE A LOT OVER TIME
- * OR MASTURBATION

TELLING LGBT+ EUMS IN STEM

MARtha CLEMON

"Get the fuck please."

* QUEER KEYWORDS - "GAY NARRATIVES", "FEMININE", "GENDER", "LOVE IS NOT"

* MOST OF THEM OF THEM RELATED TO HIV/AIDS

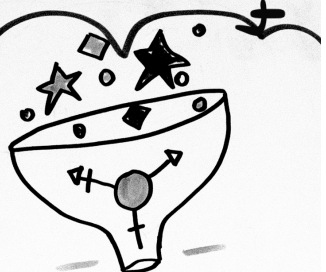
* ONLY ~50 ACTUALLY RELATED TO HIV/AIDS

* QUEER "0.047%"

* THESE ARE LONE OBJECTS MOSTLY // NOT IN PERMANENT EXHIBITIONS

NO PUBLIC ACCESS

Curatorial



Dreaming


BODIES, NORMS & SCALE



WHAT COULD BE THE MAIN BIAS IN EXHIBITION SENSES & ITS DIMENSIONS

WE WANT TO SEE NOT JUST WHITE PEOPLE

WE WANT TO IN A MUSEUM YOU NORMALLY CANT TOUCH THINGS



WE WANT GENDER STEREOTYPE TO BE A TOPIC TALK ABOUT!



END
O'

GROUP 2 ADAPT & ENHANCE

* AGENCY → What's human?
What's technical?

* NARRATIVE OF PROGRESS → out of the
HARD OF HEARING / DEAF MUSEUM?
→ e.g. do not need to enhance.

GROUP 3

CONTROL & SURVEILLANCE

WHO ACTS OUT CONTROL?

WHERE? - KITCHEN
- UNDER BRIDGES
SOCIAL MEDIA
FACIAL RECOGNITION

Sensual
Connection
to
Objects

* IS ALSO INTERSECTIONAL

GROUP 4

MEASURE & SCALE

* COLONIAL BIAS IN
"OBJECTIVE" REPRESENTATIONS
CIVIL CONTRIBUTIONS TO
NOT BUILD BIASES IN
AGAIN

WHAT ARE
GENDERED
ASPECTS OF
PAIN?

BIRTH

FEMALE SENSITIVITY

URANCE OF PAIN

TECHNOLOGY ENCODERS AND
INCREASES BIAS

WHO IS THE HUMAN "TIRE"
WHO ARE WE MEASURING
AGAINST?

WHO NEEDS THE DATA?
WHO PROFITS FROM THE DATA?

AVERAGE TEMP IN
OFFICES NOT OPTIMAL
FOR WOMEN

Measuring and Scale

BIAS THAT NUMBERS ARE...
FACTUAL OR OBJECTIVE

WHAT DOES "OBJECTIVE" MEAN?

COLONIALIST IMAGES/NARRATIVES NOT CRITIQUED

FIGURES OBJECTIFIES THE OBJECTIFIED

NO MENTION OF HOW HISTORICAL BIAS IMPACTS US TODAY

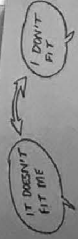
NO MENTION OF SELF REPRODUCING BIAS ARISING FROM "SCIENTIFIC" BIAS
'WOMEN BILMINIST'??

WHY CAN WE INTERVIEW ONLY MEN IN RESEARCH?

ANTI-SUBVERSIVE ACTIVISTS
* FASHION HISTORIANS

WHERE DO "SIZES" COME FROM?

QUESTIONS TO ASK USER!



WHAT HAS THIS DO TO ME?

TRANSVERSANA
GENDER + NATIONALIST
MARGARET DIETRICH
MARGARET

PRESENTATION/ DISPLAY

* DON'T OBJECTIFY WITH MORE PROBLEMATIC OBJECTS IMAGES

ECO-FRIENDLY FASHION BEHAVIOUR TO REPRODUCE? OR NOT?

WHERE DO "SIZES" COME FROM?

* FASHION HISTORIANS

ANTI-SUBVERSIVE ACTIVISTS

QUESTIONS TO ASK USER!

IT DOESN'T FIT ME

I DON'T FIT

WHAT HAS THIS DO TO ME?

ADAPT/ENHANCE

DIFFERENT ORGANISATION OF COOKING
→ not individual and in family unit

AGENCY

DOUBLE-EDGED SWORD
"FRANKFURTER KÜCHE"
ENABLE / CONTROL

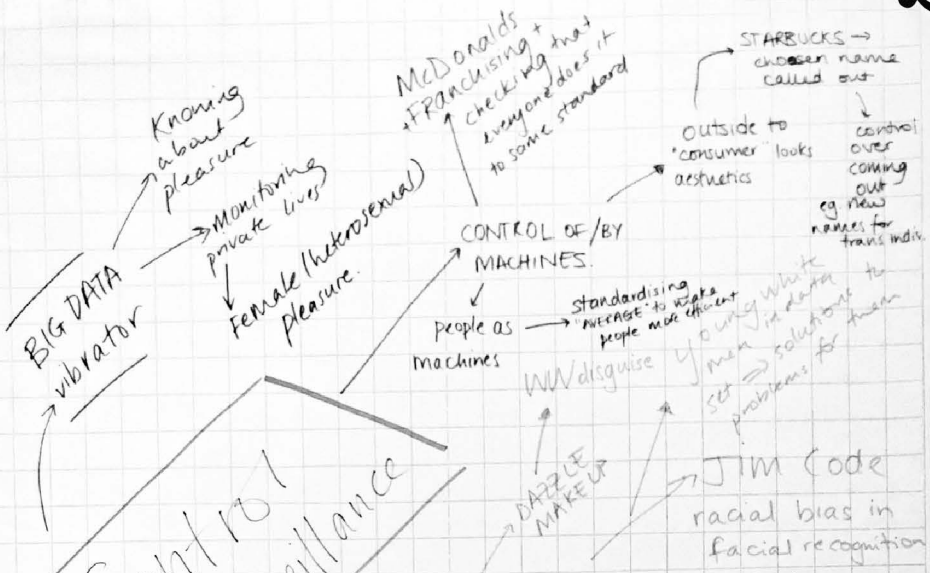
VIBRATOR
OPPORTUNITIES & CONTROL
DATA FEEDING

DEAF COMMUNITY MEMBERS' REJECTION OF HEARING AIDS

Bio-Hacking
Cyborgs

CHRONOLOGY
NO MORE!
GET RID OF STICKY ST PROGRESS

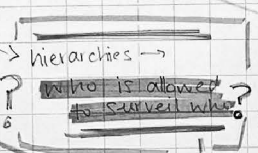
Control and Surveillance



Crime and Punishment OR Überwachen & Strafen

China ⇒ mask for virus

new AI software



GENDER BINARY

changing AI database

not about self-identification but is someone else's choice.

FRANKFURT KITCHEN

how was it dictating the way people had to work?

changing practices in cooking

DICTATING THE WAY THEY SHOULD WORK.

⊗ **EXERCISE OF POWER:**

- Shifting power (eg. Eugemics ⇒ Silicon Valley ⇒ ...)
- Fitting into "norms" of bodies
- what are we "protecting" or "controlling"

"efficiency" ⇒ making invisible

WHO CAN CONTROL WHO?

"winning" into #.

changing powers

GDPR who owns your data

corporations
=> more than state control.

erasing data over short terms

environmental activism glue on fingers

indigenous environmental movement

resisting control

DAZZLE makeup

VPNs / Tor network

natural disasters

instagram accounts run by groups.

"visiblising social problems":

what's "normal"

Kitchen design

hostile architecture

dripping water

benches

vents

spikes

WHAT DOES CONTROL MEAN?

eg. protection => control of SECURITY CAMERAS

Panopticon

SELF-REGULATION

amusement

punishment

control

control of environment

anthropocene -> changing climate or natural environment

built environment of /against climate change.

MEDICAL CARE CONTROL

BIG DATA vibrator

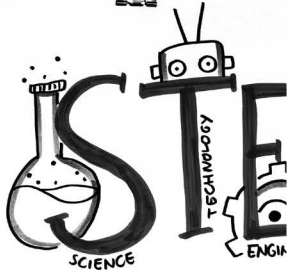
who are the doctors?

trans/gnc/intersex

who is approving the treatment?

assigning sex of intersex babies

OUTER EDGE QUEERING



WHERE IS MATHS?

MATHEMATICS EXHIBITIONS

BIOGRAPHICAL & FEMINIST

* WOMEN in MATHEMATICS

- NOETHER 1st professorship in mathematics

* IMAGES OF WOMEN & THEIR SOCIAL RELATIONS

* INTERSECTIONAL? - BLACK WOMEN?

ARABELLA DENK & ANNA PILLINGER

GUJARAT SCIENCE CITY

* NEW MUSEUM THEORY ≠ OLD MUSEUM THEORY

* GENDERED NATURE OF TECHNO SCIENCE

* NO POSTERS OF WOMEN SCIENTISTS

Rajni Gupta



TECHNI NIKOLA T

KOSJENKO LASZLO KLEMAR

* SPECIAL C "BRIDGE" PART OF

* LABELS, TE: PHOTOGRAPH 158 person

157 0

* ALSO NIKOLA TESLA'S MOTH Tesla attributed a

COLLECTIONS

M
MATHEMATICS
JEERING

ICAL MUSEUM
ESLA FIND GENDER
ONCEPT PERSPEKTIVE
TO INDUSTRIAL
TOWN
XTS & ANALYSIS
IS MENTIONED
CONTRIBUTION OF WOMEN
INTER-VENTION IS PLANNED
COSMONAUT
IER → just the "wife of" a lot to her

TAXONOMY IN BOTANY & MYCOLOGY



CATALOGUE ANALYSIS
* TRADITION OF TAXONOMY COVERS FEMALE CONTRIBUTION (no first name)
HEATHER LINDON
* OF ALL THE PEOPLE TO CONTRIBUTE PLANT NAMES WOMEN IS VERY LITTLE
1.
* WHO WAS THE FIRST WOMAN TO NAME A PLANT? WHY ARE THEY SUCCESSFUL?

SCIENCE TECHNOLOGY & COLLECTION
- PEABODY MUSEUM
@TALE
ALEXI BAKER
COLLECTION ANALYSIS

* INTERSECTIONALITY REGARDING DISPLAY & RECEPTION
* MAIN OBSTACLE: TRIVIALIZATION
ONE SOLUTION: PUT MODERN ART IN BETWEEN TO RECONTEXTUALIZE
IT IS NOT THAT IMPORTANT



Actions in Museums



WHAT CAN WE DO?

- BRING LGBTQ+ INTO THE MUSEUM
- SHIFT LOCATION OUTSIDE, CORNERS
- BIOGRAPHIES OF WE NORMALLY DO NOT TALK IN MUSEUM

EXERCISE: IN (1) & (2)

THINK OF INCLUSIVE INTERVENTIONS



BOTANICAL GARDENS VIENNA

EXAMPLE

- MAKE NAMES OF PLANTS UNDERSTANDABLE

EUROCENTRIC VIEW OF THE WORLD

SHAKE UP!

MIGRATION HISTORY OF PLANTS



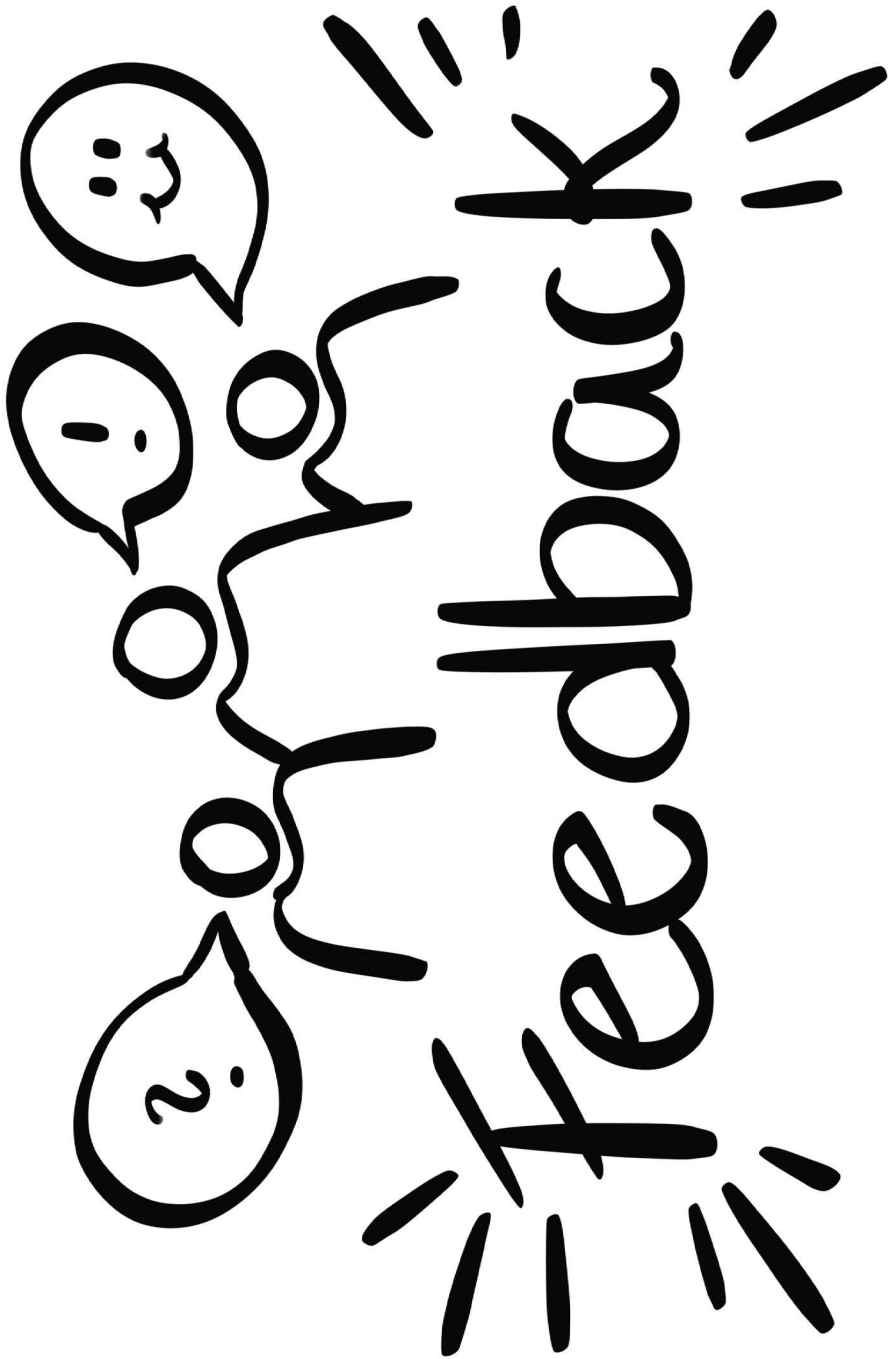
→ WHAT IS NATURAL / CULTURAL?

- THEMATIZE QUEERNESS OF PLANTS
- CONNECT "WITCHHUNT" TO HERBS & PLANTS ⇒ TOUR

→ TAKE BOTANY INTO THE STREETS & COMMUNITIES

OTHER EXAMPLES

- * OBSERVATORY → MYTHS INSTEAD OF TECH
- * APPLIED ARTS → CYBER FEMINIST PARTY
- * TECH HISTORY MUSEUM → DIGITAL EASTER EGGS
- INTERSECTIONAL STORIES



What qualifies someone or something for being included?

Still hoping that somehow that including without excluding is possible - although museums are not the best example so far



do people have to be FIRST?
do people have to have "the work"? could we have more queer quarters?
No. SOMEWHAT BUT IT IS NEEDED

INTO WHAT?

What are we offering when we offer inclusion?

WHAT CAN I GIVE PEOPLE TAKE FROM BEING INCLUDED?
* you don't have to give anything

HOW DO YOU REMEMBER TO INCLUDE EXPERIENCES / PEOPLE / ETC. YOU DON'T EVEN SEE??

What is inclusion in a systematically excluding social structure?

Why does anybody qualify for being included?

And who is judging?

Can we have a more plural group of people talking about who to have
Who are we archiving?
Who is curating?
Who is in the institution?
Who is with / for (like Simon)

Isn't this a question of power?

Wanting to be included should be enough
ALL welcome
THIS: not being an asshole helps!
...Phobic

IS IT ENOUGH JUST TO SEE YOURSELF REPRESENTED, OR DO YOU NEED SOMETHING MORE?

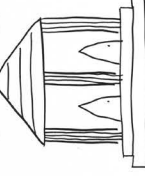
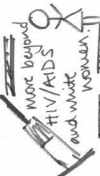


OBJECTIVITY

... Start thinking about social contexts.

feeling your voice counts + spaces for openness + discussion

What are your hopes for Queer(y)ing STEM collections?



influencing how STEM is...
... seen
... taught
... practised

To question the barrier of technological progress vs. humanity.
The presentation of technological progress is after Suller and do not consider human beings of all.

making them "irrelevant" to many people

Be a part of it

no fears

people seeing themselves + their stories + all spaces represented in the system

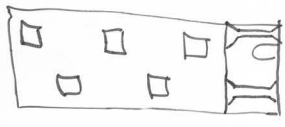
become more inclusive and less white + bi way + better for white

Shaking up the system

CHANGES HOW WE TEACH HISTORY/SCIENCE TO FUTURE GENERATIONS!

That (relatively) powerful public institutions can better respond to & meet public needs

THAT PEOPLE & COMMUNITIES FEEL LIVE THESE SPACES BELONG TO THEM AND WANT THAT THEY HAVE AN INFLUENCE



CHANGES THE WAY SCIENCE IS DONE / TECH GETS MADE!

bringing all the people to the museum (if they want to) and welcome them all equally.

STORIES THAT ARE NOT TOLD THE WORK



MATERIAL EMPowers COMMUNITIES

to change dominating narrative

MUSEUMS BECOME MOSTLY FOR THE PEOPLE, BY THE PEOPLE



Allow
uncomfortableness -
↓
sit with it

and challenge myself
to understand what

say NO
to chauvenistic ideas!

re-thinking / re-interpreting activities
think out of the box
for archiving / tagging /
databasing

What will you commit to doing to Queer(y) STEM collections?

welcome disruption /
slowness / complexity /
mess

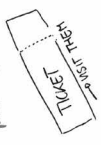
encourage these
behaviours in my students too

BE EXTRA
ANNOYING AND
"KAY" (to get in their business)

BIG PICTURES
CONTEXTUALIZING / EXPLAINING /
CRITIQUING
(if I am allowed to)

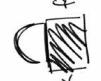


constantly engaging!
communicating with
different publics



trying to bring in
other people too! → how can
we collaborate
beyond our
"in" groups?

working in my feminist ideas into the database!



⊗ try to unlock  for more people ⊗

DONT
MAKE
ASSUMPTIONS

provide
space for
asking people
about their
preferences.

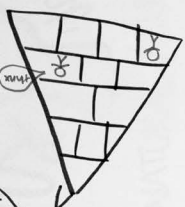
ALWAYS think
about why I make
choices, where my
assumptions come
from

domestic technology
Technology =
UP FURTHER
→ a mind linkage WITH
GEMINITY
OPEN conversations

importance of a
feminist perspective to
Studies providing the STEM fields

What institutional barriers ^{now} could you tackle with the help of this network?

I can help! (from the top)



→ YEAH!



sharing great ideas & experiences
WARNINGS
DATA!
REPORTS
CASE STUDIES!!!
FUNDING OPPORTUNITIES

learn about problems that have been encountered elsewhere
EXAMPLES OF SOME BARRIERS I WORK WITH

Other people across the world in different contexts
BUT ALSO OTHER GAINS
+ UNORGANISED: PROGRAMS, MATERIALS, EXPERIENCES

What institutions?

YOU ARE NOT ALONE!
:D

my comfort blanket
When somebody says
this is all deconstructed
and unnecessary

Make concrete & explicit & higher profile that change is needed → enrolling allies



being outside the institution can help.

language barriers
(yes, for some)



teach those who aren't as 'well-read' in gender theory → connect everyday life with these concepts.

What are "gender" & "sexuality" and how do we engage with these ideas?

they are everywhere, especially in LGBT!

sexuality?
 → gender,
 → *Hybridization / Steinhilber*



When we talk about "gender" why do we (almost) always talk about women?

seems "lacking" rather than anything else.

Finding new/other perspectives / categorizing women (other sets) are more "br mat"

They are difficult concepts that have to be reworked. ON A DAY-TO-DAY BASIS?

Making all genders & sexualities visible in all museum's media (print, exhibits, audio guide, social media, database...)

the limits of terms - how will they change in the future?

process / dynamics of gender?



REQUIRES CONSTANT SELF-CRITIQUE, ENGAGEMENT AND OPENNESSES



PEOPLE ON THE EDGE
(PRISONERS, ASYLUM SEEKERS, Refugees)

Who are we (still) missing in these discussions?

↳ what

Migrants and
Migration (in legal
(via asylum or borderless)
borderless)

Intersectionality
↳ intersection of
race and gender
also gender
reproduction of
race and gender

Those with
disabilities or different
body abilities

↳ what is "queer"



↳ what is "queer"

Disabled
Publics

NEIGHBORHOODS



Rural
people of all sorts



Different languages
+ different levels of language

AGED PEOPLE (AGEIST)
+1
LESS MEANING (SIGN LANGUAGE)

NON-UNIVERSITY / COLLEGE
EDUCATED FOLK
CHILDREN

When I get older, about queering
collectors don't we think to
offer about power - ops

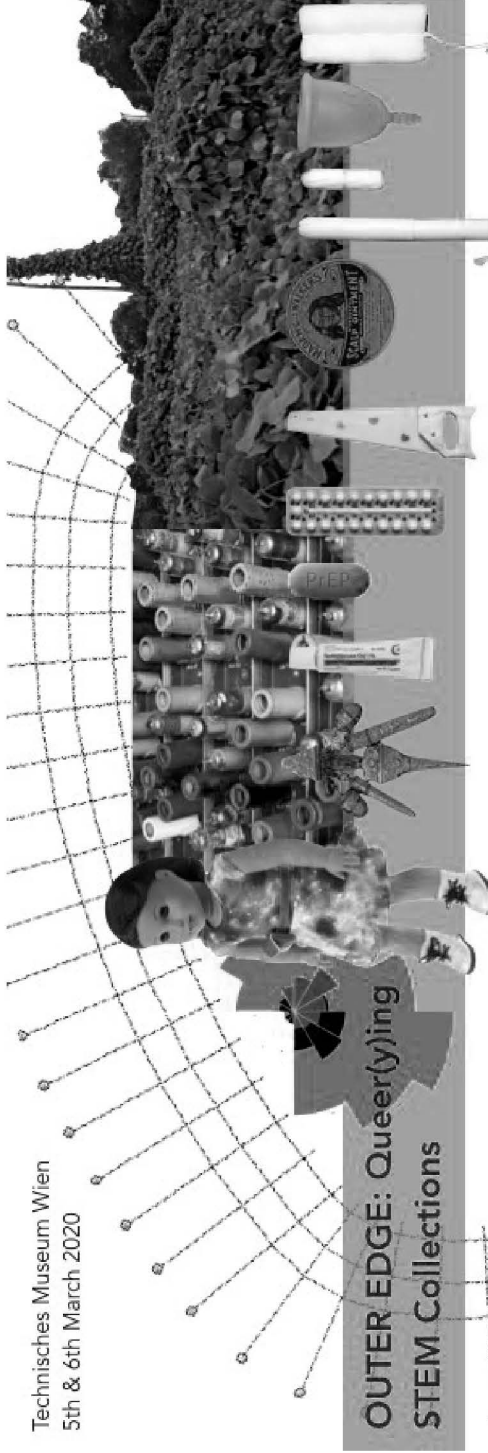
Workers
↳ older folk, many
not over every like
the word "QUEER"
DO WE NEED TO FIND
OTHER WAYS TO ENGAGE
WITH THEM?

Senior queers (65+)

indigenous
perspectives
non-western
perspectives on
knowledge
systems

WORKERS
COMMUNITY / SOCIAL

Technisches Museum Wien
5th & 6th March 2020



**OUTER EDGE: Queer(y)ing
STEM Collections**

**technisches
museumwien**
MIT ÖSTERREICHISCHER MEDIATHEK